

# 650

Compact, multi-use fume extraction unit

# PUREX

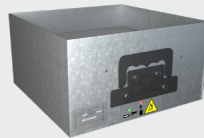
CLEAN AIR FOR EVERYONE



## Description & features

- Clear & informative graphic display
- Highest grade HEPA and carbon technology
- Automatic electronic flow control - maintains a constant extraction rate even as the filter blocks
- Gas and particle sensors to warn the operator
- Adjustable airflow
- Up to 2 large hoods

## Filters

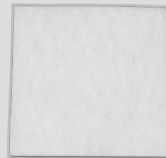


Main Filter Code

113505C

Description

HEPA/Chemical



Pre-Filter Code

200025

Description

F5 Pad

## Specification

Voltage	120v	230v
Volume Part Number	Not Applicable	080467D
Vacuum Part Number	080470D	080465D
Wattage	1.1kW	
Frequency	50Hz / 60Hz	
Cabinet Height	720mm	
Cabinet Width	445mm	
Cabinet Depth	610mm	
Cabinet Weight	55kg	
Airflow	400m <sup>3</sup> /h	
Sound Level	<60dBa	

## Machine supplied with

- 1 x Main Filter • 1 x Pre-filter • 1 x Connection Kit • 1 x Power Cable • 1 x Manual
- 1 x Arm • 1 x Hood

Find out more: [W.purex.co.uk](http://W.purex.co.uk) | [T +44 \(0\)1405 746030](tel:+44(0)1405746030) | [E purex@purex.co.uk](mailto:purex@purex.co.uk)

Registered Office: Purex International Limited, QWP House, Island Drive, Capitol Park, Thorne, Doncaster DN8 5UE  
Registered No. 5136616 England | VAT No. GB842 5025 49 | WEEE Producer Registration Number: WEE/CE0067TX  
\*Goods are subject to change | \*Illustrations are 3D created visual representations

# 650

Compact, multi-use fume extraction unit

# Options

## Main Filter

Code	Description	Code	Description
113508	Chemical	113668	HEPA / Twin Chemical
113505P	Chemical	113512	HEPA / Chemical (Cleanroom)
113809	HEPA	113669	HEPA / Chemical (Cleanroom)
113662	CSA Chemical	113505H	HEPA (Hydrophobic)
113579	HEPA / Twin Chemical	113513	Solvent Lock
	113531		Pleated Bag

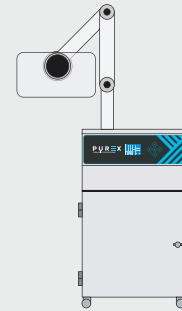
## Connection kits

### Arm & Hood Connection Kit (Optional)

The 650 machine is suitable for either single arm or dual arm.

The machine is highly mobile due to its castors and the 75mm multi position arm; meaning the machine can be moved from station to station as and when required. The arm has a working range of between 550mm and 1620mm

The large hood area of 420mm x 320mm gives the operator ample space to work.

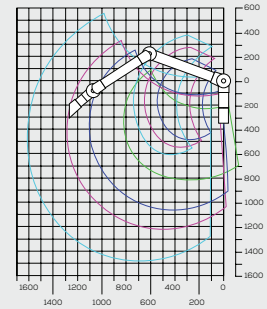
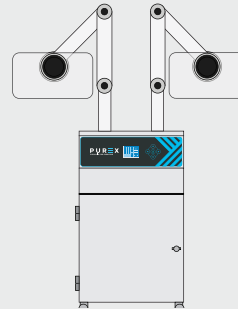


### Arm & Hood Connection Kit Upgrade (Optional)

Upgrade your 650 machine with an additional arm & hood

#### Code

Arm 120197  
Hood 840116



## Interfacing

Interfacing can remotely start the Purex machine when the connected machine starts.

Interfacing can also warn the connected machine when the Purex machine is in alarm.

Your Machine

10011010



10011010

Extractor

Take a look through our [Interfacing Guide](#) to see our extensive range of options