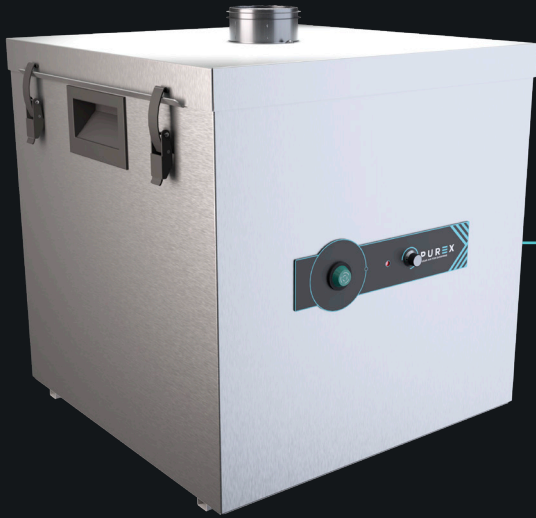


LASERSAFE

Compact, multi-use fume extraction unit

PUREX

CLEAN AIR FOR EVERYONE



Description & features

- Filter blocked warning system
- Highest grade HEPA and carbon technology
- Automatic electronic flow control - maintains a constant extraction rate even as the filter blocks
- Quiet in operation
- Simple to install and easy to relocate

Filters



Main Filter Code

110531

Description

HEPA/Chemical

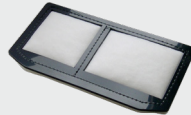


Pre-Filter Code

200096

Description

F8 / F9 Pad



Pre-Filter Code

200053

Description

Exhaust Filter

Specification

Voltage	230v
Part Number	072500
Wattage	0.5kW
Frequency	50Hz / 60Hz
Cabinet Height	493mm
Cabinet Width	471mm
Cabinet Depth	430mm
Cabinet Weight	26kg
Airflow	200m3/h
Sound Level	<60dBa

Machine supplied with

• 1 x Main Filter • 1 x Pre-filter • 1 x Connection Kit • 1 x Power Cable • 1 x Manual

Find out more: Wpurex.co.uk | [T +44 \(0\)1405 746030](tel:+44(0)1405746030) | [E purex@purex.co.uk](mailto:purex@purex.co.uk)

Registered Office: Purex International LTD, Unit A, Saltgrounds Road, Brough, HU15 1EG, UK

Registered No. 5136616 England | VAT No. GB842 5025 49 | WEEE Producer Registration Number: WEE/CE0067TX

*Goods are subject to change | *Illustrations are 3D created visual representations

LASERSAFE

Compact, multi-use fume extraction unit

Options

Main Filter

Code	Description	Code	Description
110532	Chemical	110542	Chemical Special
110533	HEPA Chemical (Cleanroom)	110541	Solvent Lock

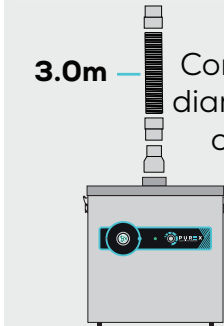
Pre-filter

200522	F5 Pad
--------	--------

Connection Kits

100032

Hose End Diameter	Hose Length	Purex Inlet Diameter
50mm	3m	80mm



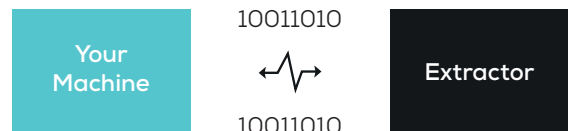
3.0m — Connect to 50mm diameter pipe/port or Purex valve

If you do not see a connection kit that fits your machine or pipework, please contact Purex or your representative

Interfacing

Interfacing can remotely start the Purex machine when the connected machine starts.

Interfacing can also warn the connected machine when the Purex machine is in alarm.



Take a look through our [Interfacing Guide](#) to see our extensive range of options