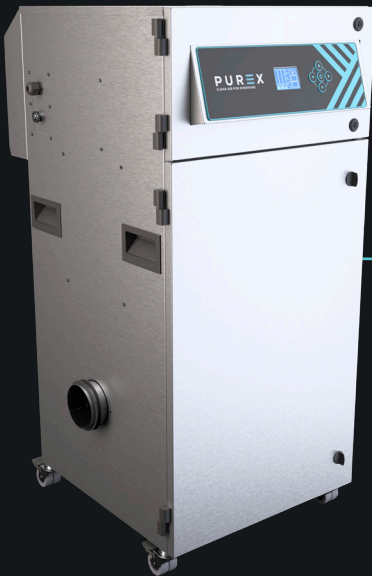


800i 2-Tier

Moderate, multi-use fume extraction unit

PUREX
CLEAN AIR FOR EVERYONE



Description & features

- Clear & informative graphic display
- Highest grade HEPA and carbon technology
- Automatic electronic flow control - maintains a constant extraction rate even as the filter blocks
- Gas and particle sensors to warn the operator
- Adjustable airflow

Filters



Main Filter Code

113652

Description

HEPA/Chemical



Pre-Filter Code

111098

Description

F6 Labyrinth

Specification

Voltage	120v	230v
Volume Part Number	080503D	080502D
Vacuum Part Number	080507D	080505D
Wattage	2.4kW	
Frequency	50Hz / 60Hz	
Cabinet Height	1155mm	
Cabinet Width	571mm	
Cabinet Depth	675mm	
Cabinet Weight	83kg	
Airflow	800m ³ /h	
Sound Level	60dBa	

Machine supplied with

- 1 x Main Filter • 1 x Pre-filter • 1 x 4.5m Fixed Power Cable (no plug) • 1 x Manual

Find out more: Wpurex.co.uk | [T +44 \(0\)1405 746030](tel:+44(0)1405746030) | [E purex@purex.co.uk](mailto:purex@purex.co.uk)

Registered Office: Purex International Limited, QWP House, Island Drive, Capitol Park, Thorne, Doncaster DN8 5UE
Registered No. 5136616 England | VAT No. GB842 5025 49 | WEEE Producer Registration Number: WEE/CE0067TX
*Goods are subject to change | *Illustrations are 3D created visual representations

800i 2-Tier

Moderate, multi-use fume extraction unit

Options

Main Filter

Main Filter

Connection kits

Code	Description
113651	Chemical
113658	HEPA / Chemical (Cleanroom)
113660	HEPA / Twin Chemical
113650	HEPA
113667	Solvent Lock
111004	F8 / F9 Labyrinth

120288

Hose End Diameter	Hose Length	Purex Inlet Diameter
80mm	2.3m	100mm

Connect to 80mm diameter pipe/port

100105

Hose End Diameter	Hose Length	Purex Inlet Diameter
100mm	2m	100mm

Connect to 100mm diameter pipe/port

100107

Hose End Diameter	Hose Length	Purex Inlet Diameter
100mm	3m	100mm

Connect to 100mm diameter pipe/port

120291

Hose End Diameter	Hose Length	Purex Inlet Diameter
100mm	3m	100mm

Connect to 100mm diameter pipe/port

100172

Hose End Diameter	Hose Length	Purex Inlet Diameter
125mm	3m	100mm

Connect to 125mm diameter pipe/port

120294

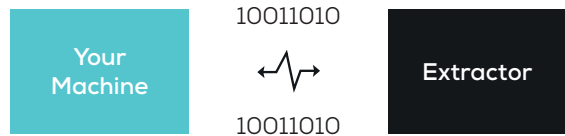
Hose End Diameter	Hose Length	Purex Inlet Diameter
150mm	3.25m	100mm

Connect to 150mm diameter pipe/port

Interfacing

Interfacing can remotely start the Purex machine when the connected machine starts.

Interfacing can also warn the connected machine when the Purex machine is in alarm.



Take a look through our [Interfacing Guide](#) to see our extensive range of options