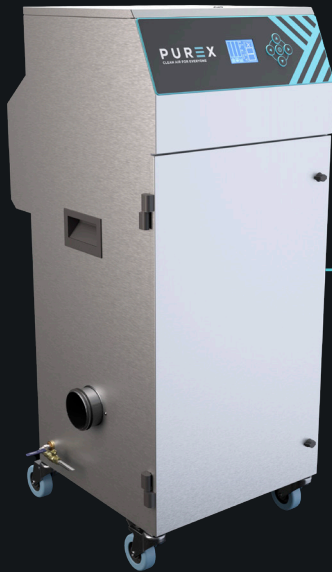


400i DYE SUB

Moderate, the process of dye sublimation

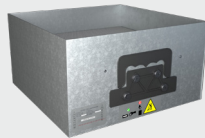
PUREX
CLEAN AIR FOR EVERYONE



Description & features

- Clear & informative graphic display
- Highest grade HEPA and carbon technology
- Automatic electronic flow control - maintains a constant extraction rate even as the filter blocks
- Gas and particle sensors to warn the operator
- Coalescing filter to collect and allow easy draining of excess fluid

Filters



Main Filter Code

113505C

Description

HEPA/Chemical



Pre-Filter Code

111057

Description

F6 Labyrinth

Specification

Voltage	120v		230v	
	Volume Part Number		OLX4028	OLX4027
Wattage	1.2kW			
Frequency	50Hz / 60Hz			
Cabinet Height	1070mm			
Cabinet Width	465mm			
Cabinet Depth	528mm			
Cabinet Weight	60kg			
Airflow	400m ³ /h			
Sound Level	<60dBa			

Machine supplied with

- 1 x Main Filter • 1 x Pre-filter • 1 x Connection Kit • 1 x Power Cable • 1 x Manual

Find out more: Wpurex.co.uk | [T +44 \(0\)1405 746030](tel:+44(0)1405746030) | [E purex@purex.co.uk](mailto:purex@purex.co.uk)

Registered Office: Purex International Limited, QWP House, Island Drive, Capitol Park, Thorne, Doncaster DN8 5UE
Registered No. 5136616 England | VAT No. GB842 5025 49 | WEEE Producer Registration Number: WEE/CE0067TX
*Goods are subject to change | *Illustrations are 3D created visual representations

400i DYE SUB

Moderate, the process of dye sublimation

Options

Connection kits

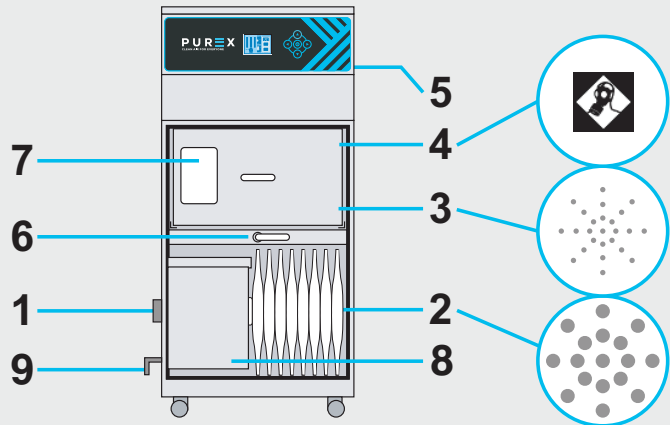
If you do not see a connection kit that fits your machine or pipework, please contact Purex or your representative

100032			100043			100171		
Hose End Diameter	Hose Length	Purex Inlet Diameter	Hose End Diameter	Hose Length	Purex Inlet Diameter	Hose End Diameter	Hose Length	Purex Inlet Diameter
50mm	3m	80mm	50mm	6m	80mm	125mm	3m	80mm
Connect to 50mm diameter pipe/port or Purex valve 			Connect to 50mm diameter pipe/port or Purex valve 			Connect to 125mm diameter pipe/port 		
120288			120297			120299		
Hose End Diameter	Hose Length	Purex Inlet Diameter	Hose End Diameter	Hose Length	Purex Inlet Diameter	Hose End Diameter	Hose Length	Purex Inlet Diameter
100mm	2.3m	80mm	100mm	2m	80mm	80mm	3m	80mm
Connect to 100mm diameter pipe/port 			Connect to 100mm diameter pipe/port or Purex valve 			Connect to 80mm diameter pipe/port 		

Technical

LEGEND:

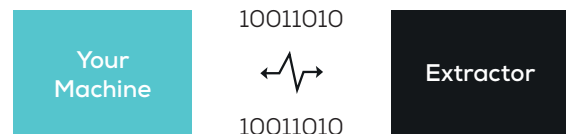
- 1. Air inlet - 80mm safe seal
- 2. Pre-filter labyrinth bag
- 3. Main filter (HEPA location)
- 4. Main filter (carbon location)
- 5. Clean air return to the workplace
- 6. Filter locking handle
- 7. Filter identification label
- 8. Coalescing filter unit
- 9. Drain tap



Interfacing

Interfacing can remotely start the Purex machine when the connected machine starts.

Interfacing can also warn the connected machine when the Purex machine is in alarm.



Take a look through our Interfacing Guide to see our extensive range of options