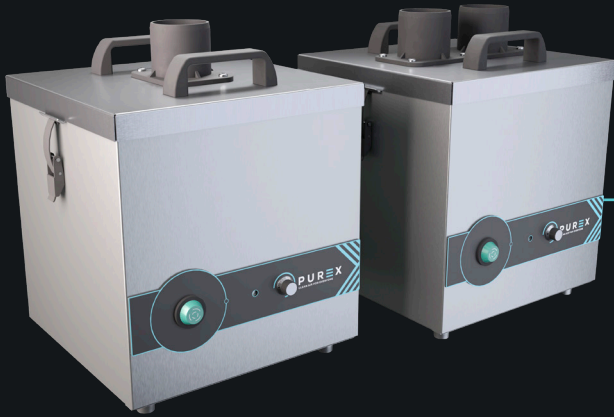


FUMECUBE

Compact, multi-use fume extraction unit
Single and dual arm variants

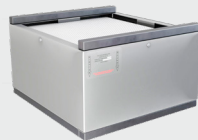
PUREX
CLEAN AIR FOR EVERYONE



Description & features

- VariColour filter blocked warning system
- Highest grade HEPA and carbon technology
- Automatic electronic flow control - maintains a constant extraction rate even as the filter blocks
- Quiet in operation
- Simple to install and easy to relocate

Filters



Main Filter Code

110536

Description

HEPA/Chemical



Pre-Filter Code

200036

Description

F5 Pad

Specification

Voltage	120v	230v
Single Arm Part Number	072067	072066
Dual Arm Part Number	072068	072065
Wattage	0.32kW	
Frequency	50Hz / 60Hz	
Cabinet Height	366mm	
Cabinet Width	308mm	
Cabinet Depth	294mm	
Cabinet Weight	12kg	
Airflow	170m3/h	
Sound Level	<60dBa	

Machine supplied with

- 1 x Main Filter • 1 x Pre-filter • 1 x Connection Kit • 1 x Power Cable • 1 x Manual

Find out more: W purex.co.uk | [T +44 \(0\)1405 746030](tel:+44(0)1405746030) | [E purex@purex.co.uk](mailto:purex@purex.co.uk)

Registered Office: Purex International LTD, Unit A, Saltgrounds Road, Brough, HU15 1EG, UK

Registered No. 5136616 England | VAT No. GB842 5025 49 | WEEE Producer Registration Number: WEE/CE0067TX

*Goods are subject to change | *Illustrations are 3D created visual representations

FUMECUBE

Compact, multi-use fume extraction unit
Single and dual arm variants

Options

Main filter


Pre-filter

Connection kits

Code	Description	Code	Description
110537	Chemical	110538	HEPA Chemical (Cleanroom)
110544	Chemical Special	110543	Solvent Lock
200095	F6 Pad	200045	F8 / F9 Pad

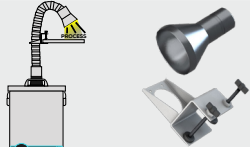

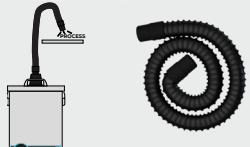
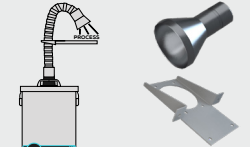
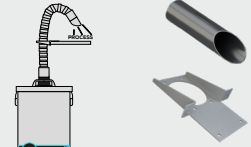
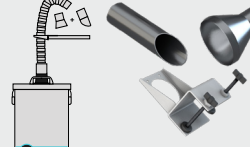
100295 Includes as standard

- 1 x 2m x 50mm flexible hose
- 2 x connecting cuffs
- 1 x 38mm stainless steel flexible arm with valve
- 1 x 95mm conical cowl
- 1 x 38mm pen nib
- 1 x clamped bench bracket



Optional

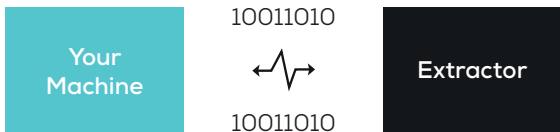
If you do not see a connection kit that fits your machine or pipework, please contact Purex or your representative

Light-up Conical Cowl		Clear Hood Cowl + Clamped Bracket		Flexihose + 2 Connecting Cuffs	
Code	Length	Code	Length	Code	Length
100295L	38mm	100299	50mm	120117	50mm
					
Conical Cowl + Screw Bracket		Pen Nib + Screw Bracket		Conical Cowl + Pen Nib + Clamped Bracket	
Code	Length	Code	Length	Code	Length
100293	38mm	100294	38mm	100295ESD	38mm
					

Interfacing

Interfacing can remotely start the Purex machine when the connected machine starts.

Interfacing can also warn the connected machine when the Purex machine is in alarm.



Take a look through our [Interfacing Guide](#) to see our extensive range of options