

FUMECUBE MAX

Compact, multi-use fume extraction unit

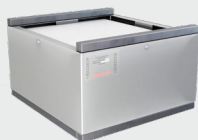
PUREX
CLEAN AIR FOR EVERYONE



Description & features

- VariColour filter blocked warning system
- Highest grade HEPA and carbon technology
- Automatic electronic flow control - maintains a constant extraction rate even as the filter blocks
- Quiet in operation
- Simple to install and easy to relocate

Filters



Main Filter Code

110507

Description

HEPA/Chemical



Pre-Filter Code

111124

Description

F8/F9 Labyrinth

Specification

Voltage	120v	230v
Part Number	See overleaf for more information	
Wattage	0.32kW	
Frequency	50Hz / 60Hz	
Cabinet Height	493mm	
Cabinet Width	308mm	
Cabinet Depth	330mm	
Cabinet Weight	14kg	
Airflow	170m ³ /h	
Sound Level	<60dBa	

Machine supplied with

• 1 x Main Filter • 1 x Pre-filter • 1 x Connection Kit • 1 x Power Cable • 1 x Manual

Find out more: W purex.co.uk | [T +44 \(0\)1405 746030](tel:+44(0)1405746030) | [E purex@purex.co.uk](mailto:purex@purex.co.uk)

Registered Office: Purex International LTD, Unit A, Saltgrounds Road, Brough, HU15 1EG, UK

Registered No. 5136616 England | VAT No. GB842 5025 49 | WEEE Producer Registration Number: WEE/CE0067TX

*Goods are subject to change | *Illustrations are 3D created visual representations

FUMECUBE MAX

Options

Compact, multi-use fume extraction unit

Main filter

Code	Description
110504	Chemical

Connection kits

Part numbers below correlate to the connection kit you will receive when ordering a FumeCube Max

Machine + Hose Kit	
Voltage	Part Number
120v	072141
230v	072140

Includes:
3m x 50mm flexible hose
2 x connecting cuffs

Machine + 38mm Single Arm Kit	
Voltage	Part Number
120v	072143
230v	072142

Includes:
1 x 80mm - 51mm reducer
1 x Arm kit (100295) *see above*

Machine + 38mm Dual Arm Kit	
Voltage	Part Number
120v	072145
230v	072144

Includes:
1 x 80mm - 51mm dual manifold
2 x Arm kit (100295) *see above*

Replacement Arms

Code	Description
120128	38mm x 1.5m flexible stainless steel arm
120129	38mm x 0.75m flexible stainless steel arm
120199	38mm x 0.5m flexible stainless steel arm

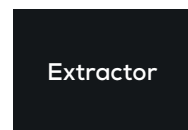
Interfacing

Interfacing can remotely start the Purex machine when the connected machine starts.

Interfacing can also warn the connected machine when the Purex machine is in alarm.



10011010



10011010

Take a look through our [Interfacing Guide](#) to see our extensive range of options