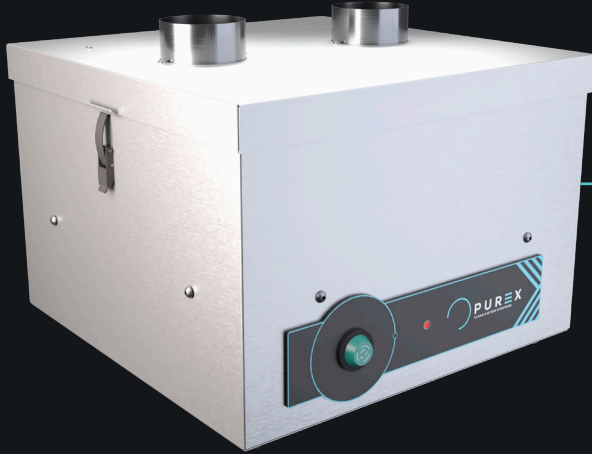


FUMEBUSTER

Compact, multi-use fume extraction unit

PUREX
CLEAN AIR FOR EVERYONE



Description & features

- Filter blocked warning system
- Highest grade HEPA and carbon technology
- Quiet in operation
- Simple to install and easy to relocate

Filters



Main Filter Code

110531

Description

HEPA/Chemical



Pre-Filter Code

200522

Description

F5 Pad

Specification

Voltage	120v	230v
Part Number	070372	070369
Wattage	0.32kW	
Frequency	50Hz / 60Hz	
Cabinet Height	350mm	
Cabinet Width	425mm	
Cabinet Depth	415mm	
Cabinet Weight	25kg	
Airflow	190m3/h	
Sound Level	<60dBa	

Machine supplied with

- 1 x Main Filter • 1 x Pre-Filter • 1 x Blanking Cap • 1 x Power Cable • 1 x Manual

Find out more: Wpurex.co.uk | [T +44 \(0\)1405 746030](tel:+44(0)1405746030) | [E purex@purex.co.uk](mailto:purex@purex.co.uk)

Registered Office: Purex International Limited, QWP House, Island Drive, Capitol Park, Thorne, Doncaster DN8 5UE
Registered No. 5136616 England | VAT No. GB842 5025 49 | WEEE Producer Registration Number: WEE/CE0067TX
*Goods are subject to change | *Illustrations are 3D created visual representations

FUMEBUSTER

Compact, multi-use fume extraction unit

Options

Main filter

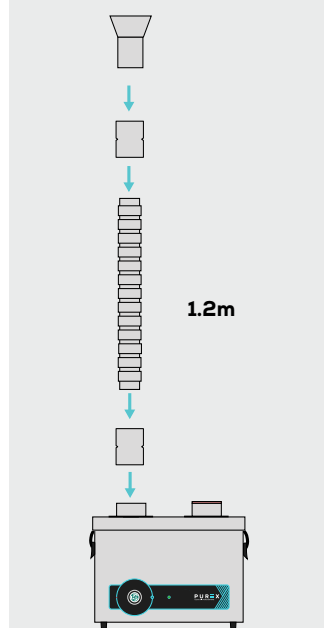
Code	Description
110532	Chemical
110533	HEPA Chemical (Cleanroom)
110541	Solvent Lock

Connection kits

If you do not see a connection kit that fits your machine or pipework, please contact Purex or your representative

Flexible Arm + Conical Cowl

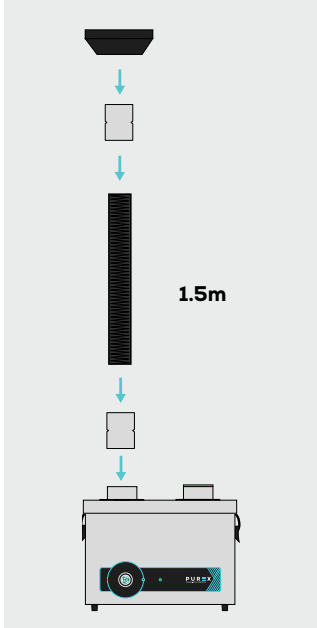
Code	Length
100181	1.2m



Includes:
 1 x 1.2m x 75mm flexible arm
 2x 75mm couplings
 1 x Conical cowl

Flexible Hose + Anti-Static Plenum Cowl

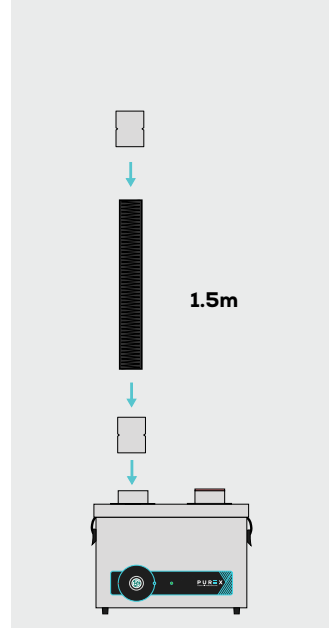
Code	Length
100182	1.5m



Includes:
 1 x 1.5m x 75mm flexible arm
 2x 75mm couplings
 1 x Anti-static plenum cowl (black)

Flexible Hose

Code	Length
100185	1.5m



Includes:
 1 x 1.5m x 75mm flexible arm
 2x 75mm couplings
 1 x Anti-static plenum cowl (black)

Blanking Cap

Blanking Cap



Part number 530430 is a cap used to remove one of the outlets of the fumebuster this allows for a single process extraction usage