



# FEATURES

- Clear & informative graphic display
- Highest grade HEPA and carbon technology
- Automatic electronic flow control - maintains a constant extraction rate even as the filter blocks
- Gas and particle sensors to warn the operator
- Up to 2 large hoods

## SPECIFICATIONS

<b>Voltage</b>	120v	230v
<b>Vacuum Part Number</b>	080470D	080465D
<b>Wattage</b>	1.1kW	1.1kW
<b>Frequency</b>	50Hz / 60Hz	50Hz / 60Hz
<b>Cabinet Height</b>	720mm	720mm
<b>Cabinet Width</b>	445mm	455mm
<b>Cabinet Depth</b>	610mm	610mm
<b>Cabinet Weight</b>	55kg	55kg
<b>Sound Level</b>	<60dBa	<60dBa
<b>Airflow</b>	400m <sup>3</sup> /h	400m <sup>3</sup> /h

## INCLUDED AS STANDARD...

### FILTERS



**Main Filter**  
**Code**  
 113505

**Description**  
 HEPA/Chemical



**Pre-filter**  
**Code**  
 200025

**Description**  
 F5 Pad

Find out more:

 [www.purex.co.uk](http://www.purex.co.uk)

 [purex@purex.co.uk](mailto:purex@purex.co.uk)

 **+44 (0)1405 746030**

## CONNECTION KIT

*Connection kit is included  
 see overleaf for options*

## OPTIONS

### Main Filter

Code:	Description:
113505H	HEPA/Chemical (Hydrophobic)
113579	HEPA/Twin Chemical
113668	HEPA/Twin Chemical
113512	HEPA/Chemical (Cleanroom)
113669	HEPA/Chemical (Cleanroom)
113508	Chemical
113809	HEPA
113513	Solvent Lock

### Main Filter

Code:	Description:
113662	Chemical Special
113505P	Chemical Special
113531	Pleated Bag

### Connection Kits

#### Included



The 650 machine is suitable for either single arm or dual arm.

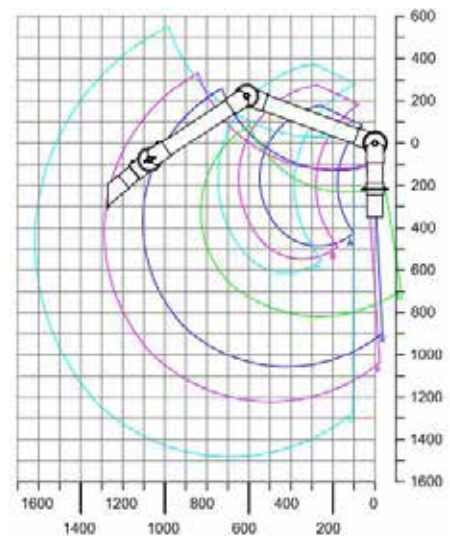
The machine is high in mobility due to its castors and the 75mm multi position arm; meaning the machine can be moved from station to station as and when required. The arm has a working range of between 550mm and 1620mm.

The large hood area of 420mm x 320mm gives the operator ample space to work.

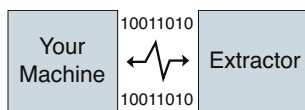
#### Optional Extra

Upgrade your 650 machine with an additional arm & hood!

**Code:**  
Arm - 120197  
Hood - 840116



### Interfacing



Interfacing can remotely start the Purex machine when the connected machine starts.

Interfacing can also warn the connected machine when the Purex machine is in alarm.

*Take a look through our Interfacing Guide to see our extensive range of options*



Purex International Limited  
QWP House, Island Drive  
Capitol Park, Thorne  
Doncaster, UK  
DN8 5UE